



**“DISCOVER THE DIFFERENCE”
ANALYTICAL INSTRUMENT
SALES, SERVICE, PARTS, TRAINING**

**(585) 492-1068
sales@gentechscientific.com**

2012 Catalog

CONTENTS

Refurbished GC Systems	1-2
Refurbished HPLC Systems	3
New HPLC Systems	4
Refurbished HPLC Components	5-6
GC/MS Systems	7
LC/MS Systems	8
UV/Visible Spectrophotometers	9
Guide to Purchasing a Refurbished Mass Spectrometer	10-11
AA & ICP Systems	12
New Citizen Balances	13
Vacuum Pumps	14
Accessories, A/D Software	15
Kits	16-17
Parts	18
Training	19
Instrument Repair	20
Trade-In Program	21

GenTech Scientific, Inc. sells GC, HPLC, MS, AA, ICP, Balances, UV/VIS, & other systems from various manufacturers.

- Hewlett Packard
- Agilent
- Perkin Elmer
- Shimadzu
- Thermo/Finnigan
- MicroMass
- Varian
- Zymark
- ABI
- Tekmar
- Hitachi
- Waters
- LabAlliance

GenTech can configure your instrument to meet your requirements by stocking a wide assortment of vacuum pumps and accessories including detectors, injectors, autosamplers, and data systems.

PURCHASE

At GenTech Scientific, Inc. our prices are so affordable that even the smallest labs can buy the best equipment with confidence! Our equipment is usually priced at about half the cost of a new instrument, and GenTech's service staff backs up your purchase of GenTech Certified equipment with a full **ONE (1) YEAR WARRANTY**. All the equipment GenTech sells is meticulously reconditioned, fully tested and promptly delivered.

RENTAL

Consider a rental for short-term and long-term projects using GenTech Financial Services. A portion of rent paid may also be applied to the purchase of the instrument. Renting may provide tax advantages.

LEASING

Competitive lease and lease-purchase plans with 1 to 5 year terms are available.

REFURBISHED GC SYSTEMS



Agilent 6890 GC with FID

Includes single Split/Splitless Injector, single Flame Ionization Detector, Electronic Pressure Control on detector and injector, Agilent 7683 Autosampler with 100-Sample Tray, LAN Communications installed on GC, manuals and a **ONE (1) YEAR WARRANTY**.

Available Options:

- Data System
- Additional or alternative detectors
- Additional or alternative injectors



Agilent 6890 GC with Dual FID

Includes dual Split/Splitless Injectors, dual Flame Ionization Detectors, Electronic Pressure Control on detectors and injectors, HPIB Communications installed on GC, manuals and a **ONE (1) YEAR WARRANTY**.

Available Options:

- Autosampler and Data System
- Additional or alternative detectors
- Additional or alternative injectors



Agilent 6890 GC with TCD and FID

Includes single Split/Splitless Injector, Thermal Conductivity Detector, single Flame Ionization Detector, Electronic Pressure Control on detectors and injectors, manuals and a **ONE (1) YEAR WARRANTY**.

Available Options:

- Autosampler and Data System
- Additional or alternative detectors
- Additional or alternative injectors



Agilent 6890 GC with FPD

Includes single Split/Splitless Injector, Flame Photometric Detector with Phosphorus Filter, Electronic Pressure Control on detector and injector, manuals and a **ONE (1) YEAR WARRANTY**.

Available Options:

- Autosampler and Data System
- Additional or alternative detectors
- Additional or alternative injectors



Agilent 6890 GC with NPD

Includes single Split/Splitless Injector, Nitrogen Phosphorous Detector (NPD), Electronic Pressure Control on detector and injector, manuals and a **ONE (1) YEAR WARRANTY**.

Available Options:

- Autosampler and Data System
- Additional or alternative detectors
- Additional or alternative injectors



Varian CP-3800 GC with FID

Includes single Split/Splitless Injector, Flame Ionization Detector, manuals and a **NINETY (90) DAY WARRANTY**.

Available Options:

- Autosampler
- Data Collection Software
- Additional or alternative detectors
- Additional or alternative injectors

At GenTech Scientific, we get new shipments of instruments daily, so if you do not see what you need here, give us a call. Chances are we will have what you need.

REFURBISHED GC SYSTEMS

GenTech Scientific, Inc. sells GC systems from various manufacturers including Agilent, HP, Perkin Elmer, Shimadzu, Varian and new systems. All of our GC systems have been meticulously refurbished and tested to guarantee quality and performance. GenTech builds your GC to meet your requirements by stocking a wide assortment of accessories including detectors, injectors, autosamplers and data systems.



HP 5890 Series II GC with FID

Includes single Split/Splitless Injector, single Flame Ionization Detector, Electronic Pressure Control on detector and injector, HPIB Communications installed on GC, manuals and a **ONE (1) YEAR WARRANTY**.

Available Options:

- Autosampler and Data System
- Additional or alternative injectors
- Additional or alternative detectors



HP 5890 Series II GC w/Dual FID

Includes dual Split/Splitless Injectors, dual Flame Ionization Detectors, Electronic Pressure Control on detectors and injectors, HPIB Communications installed on GC, manuals and a **ONE (1) YEAR WARRANTY**.

Available Options:

- Autosampler and Data System
- Additional or alternative injectors
- Additional or alternative detectors



HP 5890 Series II w/FID and TCD

Includes Packed and Split/Splitless Injectors, Flame Ionization Detector, Thermal Conductivity Detector, INET Communications installed on GC, manuals and a **ONE (1) YEAR WARRANTY**.

Available Options:

- Autosampler and Data System
- Additional or alternative injectors
- Additional or alternative detectors



HP 5890 Series II with ECD

Includes single automatic Split/Splitless Injector with pressure regulator and set up for single Electron Capture Detector, HPIB Communications installed on GC, manuals and a **ONE (1) YEAR WARRANTY**.

Available Options:

- Autosampler and Data System
- Additional or alternative injectors
- Additional or alternative detectors

Additional Systems and configurations are available for the HP 5890 and 6890 Series GC Systems. Please call for availability: **Dual FID / OI PID / FID, TCD / FID, FPD / EPC, FID / EPC, Dual FID / FID, NPD / FPD.**



HP 5890A GC with FID

Includes single Split/Splitless Injector, single Flame Ionization Detector, INET Communications installed on GC, cables, manuals and a **ONE (1) YEAR WARRANTY**.

Available Options:

- HPIB Communications
- Autosampler and Data System
- Additional or alternative injectors
- Additional or alternative detectors



Shimadzu 2010 GC

Includes single Wide Bore or Split/Splitless Injector, single Flame Ionization Detector, Automatic Pressure Control (APC), manuals and a **ONE (1) YEAR WARRANTY**.

Available Options:

- Autosampler and Data System
- Additional or alternative injectors
- Additional or alternative detectors



Perkin Elmer Autosystem XL GC with Autosampler

Includes single automatic Split/Splitless Injector with pressure regulator, single Flame Ionization Detector, manuals and a **NINETY (90) DAY WARRANTY**.

Available Options:

- Data Collection Software
- Additional or alternative injectors
- Additional or alternative detectors



Shimadzu GC-2010 for Biodiesel Analysis ASTM D6584

Includes On-Column Injector, single Flame Ionization Detector (**FID**), Biodiesel Capillary Column, Automatic Pressure Control (**APC**) manuals and a **ONE (1) YEAR WARRANTY**.

Available Options:

- AOC 20i Auto Injector 150-Sample Tray
- Single Channel Clarity Lite Software

At GenTech Scientific we get shipments of instruments daily, so if you do not see what you need here, give us a call. Chances are we will have what you need. Every system is refurbished and thoroughly tested before we sell it to ensure your satisfaction!

REFURBISHED HPLC SYSTEMS

GenTech Scientific, Inc. provides HPLC systems from Agilent, HP, Perkin Elmer, Waters, TSP, Shimadzu, Hitachi and new systems from LabAlliance. Each of these systems can be customized with our extensive inventory of accessories including detectors, pumps, autosamplers and data systems. All systems are fully tested to guarantee quality and performance.



Agilent/HP 1100 HPLC System

Includes Quaternary Pump, HP 1100 Autosampler with 100-Sample Tray, Variable Wavelength Detector, Vacuum Degasser, HP Chemstation Data System, computer system, cables, manuals and a **ONE (1) YEAR WARRANTY**.

HP 1100 Series Thermostatted Autosampler & column compartment are also available.



HP 1050 HPLC System

Includes Quaternary Pump, 21-position Autosampler, Variable Wavelength Detector, cables, manuals and a **ONE (1) YEAR WARRANTY**.

HP Chemstation Data System included with the purchase of the system. Data System includes computer, Windows, CD-ROM, floppy drive, keyboard, mouse and HP Chemstation software.

At GenTech Scientific we get shipments of instruments daily, so if you do not see what you need here, give us a call. Chances are we will have what you need. Every system is refurbished and thoroughly tested before we sell it to ensure your satisfaction!



Waters Alliance 2690, 2695, 2790, or 2795 Separations Module HPLC System

This system is an integrated solvent and sample management platform which combines two traditional high-performance liquid chromatography (HPLC) components: a solvent management system and a sample management system. The solvent delivery system incorporates two independently-driven pistons configured in a serial flow path which allows for accurate and pulse-free solvent flow. Includes a **NINETY (90) DAY WARRANTY**.

Available Options:

- 2996 Photodiode Array
- 2487 Dual Absorbance
- Column Oven
- Sample Cooling
- Column Switching



Perkin Elmer 200 Series with 785A Detector

Includes PE 200 Autosampler w/ 100-Sample Tray, PE 785A UV/VIS Detector, PE 200 Binary Pump, and Clarity Lite A/D Software.

Includes a **NINETY (90) DAY WARRANTY**.

Includes:

- PE 785A UV/Vis Detector
- PE 200 Autosampler
- PE 200 Binary Pump
- Clarity Lite Data System
- Cables
- Manuals



Shimadzu 10Avp HPLC System

Includes Shimadzu SCL-10Avp Controller, DGU—14A Degasser, FCV—10ALvp Gradient Valve, LC 10ADvp Pump, SIL 10ADvp Autosampler, CTO 10ACvp Column Oven, SPD 10AV Detector and **NINETY (90) DAY WARRANTY**. *Data System Available.*



Waters HPLC System

The **Waters HPLC** system, includes the 717 Plus Autosampler, 486 Tunable Absorbance Detector, 600 Series Pump, 600 Controller, 96-position microvial tray and a **NINETY (90) DAY WARRANTY**.

Single Channel Chromatography Data System including Clarity Lite Software available.



Hitachi 7000 Series HPLC System

Includes L-7200 Autosampler with Sample Tray, L-7400 UV Detector, L-7100 Isocratic HPLC Pump and L-7300 Column Oven. Also includes manuals and a **NINETY (90) DAY WARRANTY**.

GenTech Scientific, Inc. works closely with many major manufacturers to offer the best in quality products and services. In addition to our vast inventory of refurbished instruments, GenTech also sells new HPLC and GC systems from LabAlliance. These instruments offer exceptional quality and value and are backed by manufacturer warranties.



Prep 24 or Prep 100 Preparative Pump

The **Prep Pumps** have been specifically designed for Preparative Chromatography applications. The units provide high flow rates and high pressure capabilities, with consistent performance to minimize the potential for column damage. Includes **THREE (3) YEAR WARRANTY**.



Model CP HPLC Column Packing Pump

The **Model CP** is an electric high pressure pump operating in four constant pressure modes to efficiently pack small diameter packing materials and columns. The Model CP allows constant packing pressures up to 10,000 psi within flow rates of .01-12 mL/min. or .1-24 mL/min. The pump can also be used in a constant-flow mode with an EPROM change. Includes **THREE (3) YEAR WARRANTY**.



Lab Alliance Series III Digital Pump

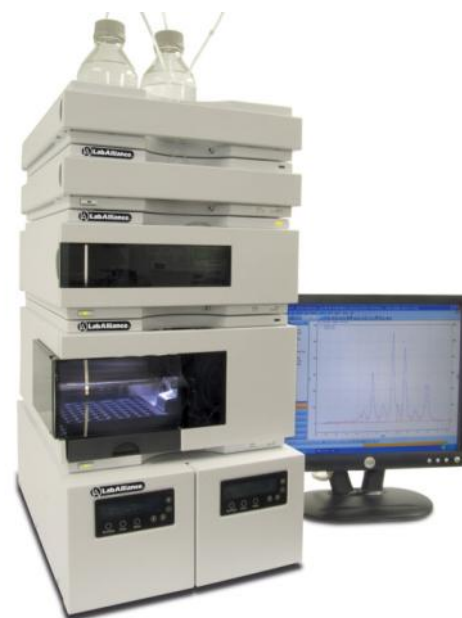
The **Series III** pump consists of a series of modular subassemblies packaged to meet any isocratic application requirements. The extensive use of digital logic and a micro-stepped motor allow for precise and flexible control. The user interface consists of an LED display and keypad. The self-flush head and a three-year warranty ensure years of trouble-free service. Method development is easy with Autoprime™ purging. Upper and lower pressure limits can be easily set, and the pressure can be monitored on the LED display. External control gives flexible performance at an affordable price. Includes **THREE (3) YEAR WARRANTY**.



LabAlliance Fract R1 Fraction Collector

The **Fract R1** accommodates one rack and includes a diverter valve and one 13 mm tube rack. Ideal for Prep HPLC, Protein, and Peptide Purifications.

- Sturdy cast aluminum frame
 - Easy to use symbolic touch screen interface
 - Built-in Ethernet and RS-232 communication capabilities
 - Faster tube changes
 - μ L delay volume between diverter valve and drop former
 - Flow rates up to 100 mL/min.
- Includes **ONE (1) YEAR WARRANTY**.



New HPLC System with 1200 Series VWD

New!!! VersaGrad Series III Analytical HPLC System!
Includes **ONE (1) YEAR WARRANTY**.

System Features:

- **Binary High Pressure Gradient Pump** with flow ranges from 0.001 to 5 mL/min., automatic pressure compensation, advanced recompression software, full calibration capabilities, stainless steel fluid path and low volume mixing.
- **1200 Series High Speed Autosampler** with 1 μ L-5000 μ L injection range, 500 μ L syringe, needle wash, 0.3% RSD for injection volume and will accept 2 trays of 96 well plates or 96 vial (1.5 mL) tray.
- **1200 Series Vacuum Degasser** with 4-channels, 10 mL/min. flow per channel and 12 mL/channel internal volume.
- **1200 Series Variable Wavelength Detector (VWD)** with double-beam photometer, D2 lamp, 190-600 nm wavelength range, standard flow cell, Controller-area network (CAN), RS232 and LAN Communications.
- **EZ Chrom SI Data System** with data acquisition, processing, full control for 1 instrument and flexible report management. Includes computer, keyboard, mouse, monitor and EZ Chrom SI software.



1200 Series HPLC Diode-Array Detector, Fluorescence Detector, Multiple Wavelength Detector, Refractive Index Detector, or Var- iable Wavelength Detector

More robust, more sensitive and ready for the future. The Agilent 1200 Series detectors allow both quantification and confirmation of the analytic identity at the lowest trace level amounts in a single analysis. These detectors enable scientists to reach lower detection limits, even under harsh and fluctuating ambient temperature and humidity conditions. Includes **ONE (1) YEAR WARRANTY**.

REFURBISHED HPLC COMPONENTS



Agilent/HP 1100 Well Plate Autosampler

This **Agilent/HP 1100** Well Plate Autosampler is in excellent condition and has been fully tested and refurbished at GenTech Scientific, Inc. It comes with 100-Sample Tray. Includes **NINETY (90) DAY WARRANTY**.

*Additionally available for purchase:
Thermostatted Controller (G1330)*



Agilent/HP 1100 Diode-Array Detector, Multiple Wavelength Detector, or Variable Wavelength Detector.

Agilent 1100 Series Detectors in excellent condition, fully tested and complete with **ONE (1) YEAR WARRANTY**.



Agilent/HP 1100 Series Handheld Controller (G1323A)

Handheld "Gameboy" 1100 HPLC Control Module (G1323A). Fully tested, for use with HP/Agilent HPLC Systems in place of Chemstation control software. Includes **NINETY (90) DAY WARRANTY**.



Agilent/HP 1100 Column Compartment G1316A

Agilent 1100 Series Column Compartment Model **G1316A** in excellent condition, fully tested and complete with a **ONE (1) YEAR WARRANTY**.



Agilent/HP 1100 Capillary Pump (G1376A)

HP/Agilent **1100 Capillary Pump** (G1376A) is fully refurbished and tested at GenTech Scientific by one of our expert technicians.

Features two dual piston pump heads, active inlet valves, solvent select valve and flow control up to 100 $\mu\text{l}/\text{min}$. Flow range settable from 0.01-20 $\mu\text{l}/\text{min}$. Pressure range of 20 to 400 bar. Includes **ONE (1) YEAR WARRANTY**.



Agilent/HP 1100 Autosampler

This **Agilent 1100 Autosampler** has been fully refurbished and tested at GenTech Scientific by one of our expert technicians and it includes a **ONE (1) YEAR WARRANTY**.

Available Option: Thermostatted Autosampler



Agilent/HP 1046A Programmable Fluorescence Detector

This stand-alone system is in excellent condition and will connect to any HPLC System or Analog HPLC Data System. Includes **NINETY (90) DAY WARRANTY**.

HPIB Communications available.



Agilent/HP Front End with Binary Pump and Degasser

This is a great front end for an LC/MS System. It has been thoroughly tested and includes a **ONE (1) YEAR WARRANTY**.



Shimadzu LC-10AT Pump

Shimadzu LC-10AT HPLC Pump offers stable solvent delivery with little flow pulsation. Two gradient elution modes are available, both low pressure and high pressure. Control is available from SCL-10A System Controller or on board control. Includes instruction manual and **NINETY (90) DAY WARRANTY**.



Shimadzu SCL-10A System Controller

The system controller is capable of controlling pump, auto injector, column oven, detector or fraction collector. Includes instruction manual and **NINETY (90) DAY WARRANTY**.

At GenTech Scientific we get shipments of instruments daily, so if you do not see what you need here, give us a call. Chances are we will have what you need. Every component is refurbished and thoroughly tested before we sell it to ensure your satisfaction!

REFURBISHED HPLC COMPONENTS



Waters 717 Plus HPLC Autosampler

The **Waters 717 Plus HPLC Autosampler** features Injection Volume Range of 1.0 μ L to 250 μ L in 0.1 μ L increments; Bandspreading of <10% contribution for all solvent systems; System Operating Pressure of 4500 psig (31027 Kpa); and Wash Flow, Solvent Rate of >0.4 mL per injection. Includes **NINETY (90) DAY WARRANTY**.



Waters 996 Photodiode Array Detector

The **Waters 996 Photodiode Array Detector** features wavelength range 190-800 nm, wavelength accuracy ± 1 nm. Linearity range 5% over -0.1 to 2.0 AU and spectra resolution 1.2 nm per photodiode. Operates exclusively with Millennium 2010 Chromatography Manager to give you fully automated quantitative and qualitative data processing and reporting capabilities. Includes **NINETY (90) DAY WARRANTY**.



Waters 2996 Photodiode Array Detector

The **Waters 2996 Photodiode Array Detector** is in excellent condition and tested at GenTech. The Waters 2996 Photodiode Array (PDA) Detector operates in any standard laboratory environment. The detector requires electrical power, sample and waste fluid lines, and either the Millennium@32 or MassLynx™ workstations. Optional connections on the detector rear panel allow communication with chart recorders, data integrators, and other instruments that are not compatible with Millennium@32 or MassLynx™ software control. Includes **ONE (1) YEAR WARRANTY**.



Waters 486 Tunable Absorbance Detector

The **Waters 486** is in excellent condition and tested at GenTech. It is a single channel tunable ultraviolet/visible detector designed for high performance liquid chromatography applications and it can operate as a stand-alone unit or with other Waters system modules. The Waters 486 provides a usable light intensity over the wavelength range of 190-600 nm. Includes **NINETY (90) DAY WARRANTY**.



Waters 410 Differential Refractive Index Detector

The **Waters 410 RID** is in excellent working condition. Satisfaction Guaranteed! The temperature-controlled optics and the patented countercurrent heat exchanger increase baseline stability for reproducible results. The 410 can be operated on its own or programmed from a Waters controller. Includes manual and **NINETY (90) DAY WARRANTY**.



Waters 2487 Dual Absorbance Detector

This **Waters 2487 Dual Absorbance Detector** is in excellent condition and tested at GenTech. It is the most sensitive and versatile absorbance detector available for HPLC. It features advanced programmability, dual wavelength capability, unmatched signal-to-noise performance, reduced optical bandwidth and exceptional linearity. Includes **NINETY (90) DAY WARRANTY**.



Perkin Elmer Series 200 LC Quaternary Pump

This pump is in good working condition and tested at GenTech. It features a flow rate of 0.01 to 10.0 mL/min. and stores up to 20 methods. The **Series 200 LC Pump** has stand-alone capability or may be placed under full PC control as part of a **Turbo LC Plus** system. Includes **NINETY (90) DAY WARRANTY**.



Flom Gastorr Model TG-14 4-Channel Degasser

The **Flom Gastorr Model TG-14 4-Channel Degasser** features a real-time LCD display that shows the vacuum levels in three (3) different measurement systems (Torr, mbar, Pa). This gives you the feedback you need to make sure that the mobile phase you are producing is accurate as well as precise. Includes **ONE (1) YEAR WARRANTY**.

At GenTech Scientific we get shipments of instruments daily, so if you do not see what you need here, give us a call. Chances are we will have what you need. Every component is refurbished and thoroughly tested before we sell it to ensure your satisfaction!

GC/MS SYSTEMS

GenTech Scientific, Inc. offers some of the leading GC/MS systems in the industry from manufacturers like Agilent, HP and Thermo Finnigan. All of these systems are reconditioned to deliver superior sensitivity for the most demanding quantitative applications. Like all GenTech instruments, these systems are fully tested and offer exceptional value.



Agilent 5975 Inert GC/MSD

Includes Agilent 6890N GC with Split/Splitless Injector with Electronic Pressure Control. Agilent 5975 Inert MSD has a 10-1050 amu, heated EI Ion Source, heated transfer line, Monolithic Hyperbolic Quadrupole Mass Filter, new mechanical pump and high performance turbo pump.

GC/MS Chemstation Data System comes complete with Pentium Computer with Windows XP or 2000 Operating System and **GC/MS Chemstation** software, keyboard and mouse.

Includes cables, manuals and a **NINETY (90) DAY WARRANTY. One (1) Year Warranty available with installation.**



Agilent/HP 5973 MSD with 6890 GC

Includes Split/Splitless Injector with Electronic Pressure Control. MS has a 10-700 amu, heated EI Source, heated transfer line, mechanical pump and diffusion pump. Data System comes complete.

Software includes G1701BA HP Chemstation and Agilent/HP 5973 MSD reference collection. Includes cables, manuals and a **NINETY (90) DAY WARRANTY. One (1) Year Warranty available with installation.**

Available Options:

- Agilent/HP 5973 MSD with 6890 GC and 250L Turbo Pump
- Agilent/HP 5973N MSD w/ 6890 GC (EI/CI)



HP 5970 GC/MS with 5890 Series II GC

Includes HP 5970 MS with heated ion source, heated transfer line, ion gauge tube, 10-800 amu mass range, turbo pump and new roughing pump. HP 5890 Series II GC includes single Split/Splitless Injector, HPIB Communications, all cables to connect to GC and Data System, manuals and a **NINETY (90) DAY WARRANTY. One (1) Year Warranty available with installation.**

Autosampler also available.



HP 5972 GC/MS with 5890 Series II GC

Includes Split/Splitless Injector, HP 5972 MSD with heated ion source, heated transfer line, 10-650 amu mass range and roughing pump. Data System includes G1701AA Chemstation. Includes cables, manuals and a **NINETY (90) DAY WARRANTY. One (1) Year Warranty available with installation.**

Autosampler also available.



HP 5971 GC/MS with 5890 Series II GC

Includes Split/Splitless Injector, HP 5971 MS with heated ion source, heated transfer line, ion gauge tube, 10-650 amu mass range, turbo pump and new roughing pump. Includes Data System, Chemstation, cables, manuals and a **NINETY (90) DAY WARRANTY. One (1) Year Warranty available with installation.**

Autosampler is also available.



HP G1800A GCD Series II GC

The GC includes a single Split/Splitless Injector and HPIB Communications. The Mass Spec features a heated ion source, heated transfer line, analyzer, mechanical pump and new roughing pump. It has Electron Ionization (EI) and it is single ion monitoring (SIM).

Includes software, Data System and a **NINETY (90) DAY WARRANTY. One (1) Year Warranty available with installation.**

Autosampler also available.



Thermo Finnigan Polaris Q GC/MS

Use the power of MS ion trap technology to target specific compounds in complex matrices. The Polaris Q offers unparalleled sensitivity in full scan, plus the power of MS/MS. It provides dependable performance for routine applications plus the added horsepower to go further, enabling lower detection in complex matrices.

Includes Trace GC with split/splitless inlet with Digital Pressure and Flow Control, **Xcalibur Data System** with Auto-tune or Manual tune, Auto-optimization for MS/MS, AS 3000 Autosampler with 105-position sample tray, Ion Volume Removal/Insertion Tool and **NINETY (90) DAY WARRANTY.**

At GenTech Scientific we get shipments of instruments daily, so if you do not see what you need here, give us a call. Chances are we will have what you need. Every system is refurbished and thoroughly tested before we sell it to ensure your satisfaction!

LC/MS SYSTEMS

GenTech Scientific, Inc. offers some of the leading LC/MS systems in the industry from manufacturers like ABI, HP/Agilent and Thermo Finnigan. All of these systems are reconditioned to deliver superior sensitivity for the most demanding quantitative applications. Like all GenTech instruments, these systems are fully tested and offer exceptional value.



Finnigan LCQ Classic LC/MS/MS

Features a mass range of 150 to 2000 amu and it includes an Electrospray Ionization Probe, Xcalibur Data System and a mechanical pump. The Xcalibur Data System is a flexible Windows PC based system for complete instrument control for the Finnigan LCQ family of mass spectrometers. Its capabilities include full MS with Selected Ion Monitoring (SIM), MS/MS with Selected Reaction Monitoring (SRM) and Electrospray Ionization (ESI) Probe for highly polar and ionic compounds.

Ions of either positive or negative polarity can be detected. Quantitation sensitivity in the pg/mL concentration range or lower can be achieved. Includes **NINETY (90) DAY WARRANTY. One (1) Year Warranty available with installation.**



Finnigan LCQ Deca LC/MS/MS

The Finnigan LCQ Deca LC/MS/MS system is in very good condition and tested at GenTech. It features a mass range of 150 to 2000 amu. Includes Electrospray Ionization Probe, Edwards E2M30 Vacuum Pumps, Xcalibur Software, computer with Windows 2000 and **NINETY (90) DAY WARRANTY. One (1) Year Warranty available with installation.**

The Xcalibur Data System is a flexible Windows NT PC based system for complete instrument control for the Finnigan LCQ family of mass spectrometers. *Service and Operation Training available at GenTech Scientific, Inc. or in your lab.*



Finnigan LCQ Deca XP Plus LC/MS/MS

This system is in very good condition and tested at GenTech. It is an advanced analytical instrument which includes micro Electrospray Ionization (ESI) Probe, Syringe Pump, a divert/inject valve, an Atmospheric Pressure Ionization (API) Interface, a mass spectrometer (MS) detector, mechanical pump, Xcalibur Software and computer with Windows OS. It features a mass range of 150 to 4000 amu and sweep gas. Includes a **NINETY (90) DAY WARRANTY. One (1) Year Warranty available with installation.**



Finnigan LTQ LC/MS

The LTQ is the latest in the Thermo Ion Trap Mass Spectrometers. The mass range is m/z 50 – 4000. The Scan Power MSⁿ, for n = 1 through 10. Power requires one 230 Vac ± 10.0%, 15 Amps. 50/60 Hz, single phase, with earth ground dedicated to the instrument. Automatic Gain Control. Data System with Microsoft Windows XP Operating System – printer and monitor are NOT included with the sale. Includes Xcalibur processing and instrument control software. The system includes a **NINETY (90) DAY WARRANTY. One (1) Year Warranty available with installation.**



Thermo Finnigan TSQ Quantum

Features a mass range of 30-3,000 m/z and Highly Selective Reaction Monitoring (H-SRM). Includes HyperQuad Quadrupoles, ESI Source, Xcalibur Data System, manuals and a **NINETY (90) DAY WARRANTY. One (1) Year Warranty available with installation.**



Agilent/HP 1100 MSD ESI-MS

Features a mass range up to 3000 amu, simultaneous positive and negative modes and Electrospray Source (ESI). The system includes High Performance LC 2D Chemstation software, computer, keyboard, mouse, manuals, cables and a **NINETY (90) DAY WARRANTY. One (1) Year Warranty available with installation.**

Available Options:

- 1100 Degasser
- Quaternary Pump
- Autosampler

All pumps associated with a turbo pump system are limited to a Ninety (90) Day Warranty.

At GenTech Scientific we get shipments of instruments daily, so if you do not see what you need here, give us a call. Chances are we will have what you need. Every component is refurbished and thoroughly tested before we sell it to ensure your satisfaction!

NEW UV/VISIBLE SPECTROPHOTOMETERS



Libra S4 and S6

Lamp Source: Tungsten
Optical System: Diode Array
Instrument Parameters:
Wavelength Range: 330-800 nm
Absorbance Range: -0.3-2.5A
Bandwidth: 7 nm
Stray Light at 340 nm: <1%T
Comment: Ideal for QC / teaching



Libra S11 and S12

Lamp Source: Tungsten
Optical System: Single Beam
Instrument Parameters:
Wavelength Range: 325-999 nm
Absorbance Range: -0.3-3.000A
Bandwidth: 5 nm
Stray Light at 340 nm: <0.05%T
Comment: Ideal for QC / teaching

The **Libra S4 & Libra S6** are small and highly portable Visible Spectrophotometers optimized for use in educational and routine QC applications. The Libra S4 has large characters on the display and can be used with cells or test tubes. The Libra S6 has flash scan diode array for extremely fast scanning to graphics display, along with kinetics and standard curve as well as comprehensive method storage for defined experimental procedures (up to 99). The cell holder from both can be removed for cleaning and they are supplied with Grafico PC utility software and a serial cable for download of results to a PC. The Libra S2 is a colorimeter for student and field use.

The **Libra S11 & Libra S12** Visible and UV/Visible Spectrophotometers have a start-up menu that can be customized to suit changing laboratory needs. As well as the basic routines (Absorbance, %T, Concentration, Ratio), they also have scanning, kinetics and standard curve capabilities coupled with the advantages of graphics display and method storage. Accessory options include a test tube holder, cylindrical cell holder and two-position cell changer. All results can be downloaded directly to Excel if required. The instruments can be under full PC control when used with Acquire Lite software.



Libra S21 and S22

Lamp Source: Xenon, press to read
Optical System: Split Beam, Reference Beam Compensation
Instrument Parameters:
Wavelength Range: 325-1100 nm
Absorbance Range: -0.3-3.000A
Bandwidth: <3 nm
Stray Light at 340 nm: <0.05%T
Comment: Laboratory Workhorse



Libra S32, S32PC, S35, and S35PC

Lamp Source: Deuterium / Tungsten
Optical System: Split Beam, Reference Beam Compensation
Instrument Parameters:
Wavelength Range: 190-1100 nm
Absorbance Range: -0.3-3.000A
Bandwidth: 1 nm or 1.8 nm
Stray Light at 220&340 nm: <0.025%T
Comment: Ideal for Analytical Labs

The **Libra S21 & Libra S22** are standard Spectrophotometers that utilize a Xenon lamp source to provide low cost of ownership, since there is no expensive Deuterium lamp to replace. They have a full graphics display & a suite of onboard software that covers wavelength scanning (including zoom), multi wavelength equation entry, kinetics, standard curve & method storage. They have GLP self-diagnostics & a wide range of accessories, and are traditional "workhorse" instruments. The instruments can be under full PC control when used with Acquire software.

The **Libra S35 & S35PC** are high performance, 1nm bandwidth UV/Visible Spectrophotometers that comply with Pharmacopoeia requirements (the Libra S35PC is supplied with Acquire software and is a PC only controlled version). For other users, the **Libra S32** and **32PC** are 1.8 nm bandwidth version of the same instruments. The Libra S35 and S32 both have full complements of onboard software, and use press to read (PTR) technology for the Deuterium and Tungsten lamps, providing increased lifetime.

Libra S50, S60, S70 and S80

The Libra S50, S60, S70 and S80 are a stand alone scanning UV/Visible spectrophotometers with Color Touchscreen and USB interface for data/method storage. Dual beam or Split beam (S50) optical configuration with long life lamp sources.

Built in software modules include fixed wavelength, wavelength scanning, calibration curves, kinetics, Equation editor and pre-stored Life Science applications. Software is available in multiple languages and includes on-board data/method storage and User log on. Supplied with Print via Computer (PVC) software and USB cable allowing automatic data export and printing via PC. *Optional printer, Bluetooth, and other accessories are available.*



At GenTech Scientific we get shipments of instruments daily, so if you do not see what you need here, give us a call. Chances are we will have what you need. Every spectrophotometer is refurbished and thoroughly tested before we sell it to ensure your satisfaction!

A BASIC GUIDE TO PURCHASING A R ...AND CHOOSING A R

FIRST; determine the needs of your lab

- Do you have a limited budget for purchase?
- Will you need proven technology?
- Are you interested in a demo of your instrument before purchase?
- Are you interested in long term support?

If you answered YES to any of these questions then you are most likely

SECOND; What is your Application? Your application will help you determine what type

THIRD; Do you need a GC or LC system for your separation? Consider

GC/MS Considerations

Single Quad MS

Features:

Mass Range 10-700 amu (Typical)
Small Footprint
EI or CI Capability
Introduction by GC or Solids Probe
Quantitative Analysis
Spectral Library
SIM



Typical Models:

Agilent-597X
Thermo-DSQ, SSQ
Shimadzu-2010, QP 5000
Perkin Elmer-Clarus, Turbo Mass

Ion Trap MS

Features:

Mass Range 10-700 amu (Typical)
Small Footprint
EI or CI Capability
Introduction by GC or Solids Probe
Qualitative Analysis
SIM



Typical Models:

Thermo-GCQ, Polaris Q
Varian-Saturn

Triple Quad MS

Features:

Mass Range 4 - 4000 amu (Typical)
Parent/Daughter Ion Identification
EI or CI Capability
Introduction by GC or Solids Probe
Quantitative Analysis
Neutral loss Precursor Ions
Spectral Library
True MS/MS
SIM



Typical Models:

Thermo-TSQ
Varian-1200L
Waters/Micromass-Quattro

FINALLY; When buying refurbished, the most important decision is choosing a reputable provider

Technical Support:

- Do they provide installation in your facility with their own engineer or do they have to rely on a subcontractor?
- Do they have multiple engineers on staff?
- Are their engineers trained and capable of multi-vendor support?
- Do they have chemists on staff to assist you?
- Do they have the ability to service past and present models?
- Do they offer expert technical telephone and field support?
- Are their engineers experienced instrument operators?
- Can you talk directly to the service engineers prior to purchase?
- Will they provide you with the manuals to operate your instrument?
- Do they have proof of insurance to work at your facility?
- Do they stock hard to find parts?
- Do they offer additional customized training courses for operation, maintenance and methods?

Business Philosophy:

- Do they deliver a high quality, fully refurbished instrument or is it simply a used mass spec?
- Does the company service what it sells?
- Do they own, not broker, the equipment they sell?
- Do they have a proven track record and a diverse customer base?
- How long have they been in business?
- Do they send test and calibration data to prove quality?
- Does the vendor custom crate instruments before sale?
- Are they willing to provide references prior to purchase?
- Is the instrument thoroughly cleaned and calibrated?
- Do they offer a 1 YEAR WARRANTY?
- Do they offer a satisfaction guarantee with every sale?
- Does the vendor have an up-to-date, well-maintained inventory or just a list of equipment for sale?
- Do they have a large inventory or just 1 or 2 instruments?
- Will they provide you with photos of the actual instrument?
- Can you visit the vendor and see the instrument?
- Is the integrity of the company reflected in their pricing?
- Do they have the instrument in inventory or will they order it for you?

Full service, support, inventory, and reliability are VERY IMPORTANT! As Ben Franklin said

REFURBISHED MASS SPECTROMETER

REPUTABLE PROVIDER

laboratory. Ask the following questions:

- Do you have instruments to trade in from other manufacturers?
- Do you have existing components that will be integrated into the MS you purchase?
- Are these components from different manufacturers?

Are you interested in purchasing REFURBISHED equipment. Please read on!

What type of MS you will need. (Broad Range of Analyses or 1 or 2 routine ASTM, EPA methods)

Consider the characteristics of the system that best suits your needs.

LC/MS Considerations

Single Quad MS

Features:

Mass Range 50-2000 amu (Typical)
ESI/Turbo Ion Spray
APCI / Heated Nebulizer
Quantitative Analysis
SIM



Typical Models:

Thermo-SSQ
Agilent-1100
ABI-150
Waters-ZMD

Ion Trap MS

Features:

Mass Range 50-4000 amu (Typical)
ESI/Turbo Ion Spray
APCI / Heated Nebulizer
Nano Spray
Qualitative Analysis
Extended Mass Range Available
MALDI
SIM



Typical Models:

Thermo-LCQ Family

Triple Quad MS

Features:

Mass Range 50-4000 amu (Typical)
ESI/Turbo Ion Spray
APCI / Heated Nebulizer
Nano Spray
Quantitative Analysis
Parent/Daughter Ion Identification
Neutral loss Precursor Ions
SIM



Typical Models:

Thermo-TSQ
Waters/Micromass-Quattro LC
ABI-365, 2000, 3000

Order for your instrumentation. Ask your provider if they offer the following Value-Added Benefits:

Has the instrument been tested or

Can you resell?
Does the provider have a distinguished reputation?

What is the expected instrument performance?
When will it be shipped?
When will you purchase?
Is it fully packed prior to shipment?

What other instruments do they sell?
Do they have a maintained web site or

Do they have other instruments?
Do they have a full instrument from their inventory?
Has the instrument been in operation prior to purchase?
Do they have Dun & Bradstreet and BBB profiles?
Will they purchase it to fill your order?

Pricing:

- Do they offer flexible payment terms or do they always require payment up front?
- Are financing solutions through Lease/Rental available?
- Do they offer reasonable labor and travel rates?
- Will they take your existing equipment in on trade? Is the trade-in price fair?
- Are they willing to offer a quantity discount?
- Do they provide a detailed quote outlining the pricing, warranty and shipping/installation?
- A refurbished Mass Spec should cost 30% to 50% of list price when it was new. Is their pricing in line with this?
- Do they have competitive prices and offer added value?

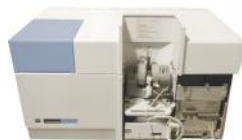
"The bitterness of poor quality remains long after the sweetness of low price is forgotten."

AA & ICP SYSTEMS



Perkin Elmer 4100ZL AA

The **Perkin Elmer 4100ZL AA** is in excellent condition and fully tested at GenTech. Includes Perkin-Elmer 4100 Zeeman with Furnace, AS 71 Autosampler, and Furnace Cooling System, computer, manuals, AA WinLab software, choice of one (1) lamp - if available, and **NINETY (90) DAY WARRANTY**.



Perkin Elmer SIMAA 6000

The **SimAA 6000** can measure the absorption of particular wavelengths of light when passing through a flame in which atoms from metal salts (e.g. sodium and potassium) are being ionized.

The SimAA 6000 features a double beam measurement system with auto baseline, single path optical system, simultaneous multi-element measurement, a PE furnace cooling system, AS -72 Autosampler, data system with WINLAB software, and a wavelength range of 180-900 nm. Includes **NINETY (90) DAY WARRANTY**.



Perkin Elmer AAnalyst 800 System

The model **Perkin Elmer AAnalyst 800** includes switchable Flame and Furnace in one AA, Autosampler for Flame and Furnace, Data System with AA WinLab software and **NINETY (90) DAY WARRANTY**.



Perkin Elmer Elan 6100 ICP/MS System

Features rapid multi-element coverage, isotopic information, low detection limits, wide linear dynamic range, high sample throughput, and semi-quantitative, as well as quantitative analysis.

System Includes: Dual Leybold TriVac Vacuum Pumps, Perkin Elmer Peristaltic Pump, and Elan ICP/MS Data system with software, monitor, keyboard, mouse, cables, and manuals. It is fully refurbished and tested with **NINETY (90) DAY WARRANTY**.



Perkin Elmer Optima 4300 Dual View ICP

This PE Optima 4300 Dual View ICP-OES is in excellent condition and has been fully tested and refurbished at GenTech Scientific.

The Optima 4300™ DV ICP-OES offers the performance required to maximize productivity, and the optimized design required to ensure accuracy, improve method development, and consistently deliver the correct answer. The SCD detector provides fast and accurate performance. Exclusive high-resolution mode provides easier method development and greater accuracy. Exceptional reliability with an integrated solid-state RF generator. Dual-view optical system ensures the widest working range. Thermostatted optical system eliminates peak profiling and searching, ensuring exceptional long-term stability. Enhanced sample throughput and performance with simultaneous background correction. WinLab 32 ICP Data System with computer, keyboard, mouse and monitor. Includes **NINETY (90) DAY WARRANTY**.



Agilent 7500 ICP-MS

Features a mass range of 2-260 amu, RangeShield Torch System, Peltier-cooled Spray Chamber, fully automatic, computer controlled torch position in all 3 axes, active Mass Flow Controllers for control of plasma and collision gases, hyperbolic profile Quadrupole rods, collision/reaction cell for removal of polyatomic interferences, simultaneous dual mode detector with high-speed amplifier. System includes: Integrated Autosampler with Sample Tray; Chemstation Data System with G1834 ICP/MS Software; chiller and **Ninety (90) Day Warranty**.



Varian Vista-MPX CCD Simultaneous ICP-OES

The **Vista-MPX** is the world's first ICP detector to provide over 1.1 million pixels in a large area, CCD array design. The Vista-MPX is ideal for environmental, chemical and industrial laboratories, offering a host of benefits. Includes **NINETY (90) DAY WARRANTY**.



Varian Liberty AX Sequential ICP-AES w/ Ultrasonic Nebulizer

The **Varian Liberty AX Sequential ICP-AES** systems are in excellent condition. They have been refurbished and fully tested at GenTech. Includes **NINETY (90) DAY WARRANTY**.

At GenTech Scientific we get shipments of instruments daily, so if you do not see what you need here, give us a call. Chances are we will have what you need. Every spectrophotometer is refurbished and thoroughly tested before we sell it to ensure your satisfaction!

NEW CITIZEN BALANCES

Do you need **high precision analytical measurements**? Would you like to make your work faster, easier and more reliable? **Citizen** offers a wide selection of **analytical balances** that are accurate and precise.

Citizen's analytical balances feature a capacity of 60 gm to 301 gm with a readability of 0.1 mg. They also incorporate automatic self-calibration according to change in the ambient temperature. They require a draft-free location on a solid bench that is free of vibrations. Citizen's professional line of analytical balances includes many models to suit various analytical applications.

Precision Balances

Citizen's new and improved Precision Series incorporates unique and unequalled high end technology built to match the highest international standards. The CY-C Series of precision balances includes fully automatic internal calibration and a **TWO (2) YEAR WARRANTY**.

CY 220 – 220 gm capacity

CY 360 – 360 gm capacity

CY 510 – 510 gm capacity

CY 720 – 720 gm capacity



Micro Balances

Citizen's Micro Balances have the highest resolution compared to any other analytical balances. Includes **TWO (2) YEAR WARRANTY**.

CM 5 – 1 μ g to 5 gm

CM 11 – 1 μ g to 11 gm

CM 21 – 1 μ g to 21 gm



Moisture Balances

Citizen's Moisture Balances offer the fastest and most convenient solution for measuring moisture content. Includes **TWO (2) YEAR WARRANTY**.

MB 50 – 1 mg to 50 gm

MB 200 – 1 mg to 200 gm



Analytical Balances

The CX Series features fully automatic internal calibration and User-Selected Time Calibration. Enables accurate and precise weighing. Includes **TWO (2) YEAR WARRANTY**.

CX 120 – .1 mg to 120 gm

CX 220 – .1 mg to 220 gm

CX 301 – .1 mg to 301 gm



Semi-Micro Balances

Citizen's Semi-Micro Balances offer the right performance and convenient features to accomplish the most sophisticated weighing tasks. If you want to do more than "basic weighing," the application programs will let you easily perform piece counting, percentage weighing, check weighing, filling, or statistics. Includes **TWO (2) YEAR WARRANTY**.

CX 265 – .01 mg to 60/210 gm

CX 205 – .01 mg to 200 gm



VACUUM PUMPS

GenTech Scientific, Inc. works closely with many major manufacturers to offer the best in quality products and services. To that effort, we are proud to be a distributor of BOC Edwards Vacuum Pumps, ULVAC Pumps and Clarity Lite Data Systems. In addition to manufacturer warranties, free lifetime technical phone support is included on instruments purchased through GenTech Scientific, Inc.

BOC EDWARDS



NEW XDS5 Dry Vacuum Pump

Totally dry, lubricant-free vacuum. No oils or greases of any kind. Cleaner, more repeatable processes. No bearing or shaft seals, no bearing purges.

Features include: Ultimate 0.07 mbar (0.05torr), $6\text{m}^3\text{h}^{-1}$ (3.5 cfm)@ 60Hz, 3 position gas ballast selector — pumps in excess of 200 gh^{-1} . Includes **ONE (1) YEAR WARRANTY**.



NEW XDS10 Dry Vacuum Pump

Totally dry, lubricant-free vacuum. No oils or greases of any kind. Cleaner, more repeatable processes. No bearing or shaft seals, no bearing purges.

Features include: Ultimate 0.07 mbar (0.05torr), $11\text{m}^3\text{h}^{-1}$ (6.5 cfm)@ 60Hz, 3 position gas ballast selector — pumps in excess of 200 gh^{-1} . Includes **ONE (1) YEAR WARRANTY**.



NEW XDS35i Dry Vacuum Pump

Totally dry, lubricant-free vacuum. No oils or greases of any kind. Cleaner, more repeatable processes. No bearing or shaft seals in the pumping volume, no bearing purges.

Features include: Ultimate pressure 0.01 mbar (8mTorr), Peak pumping speed of 35 m^3h on 50 or 60Hz supply, 3 position gas ballast selector — pumps in excess of 200 g/h . Includes **ONE (1) YEAR WARRANTY**.



NEW ULVAC Rotary Vane Pump Model ULGLD-040

Features include: gas ballasting to remove solvent vapors; forced oil supply for optimum lubrication during pumpdown; and an anti-suckback device to protect the chamber during power failure. Includes **ONE (1) YEAR WARRANTY**.

REFURBISHED PUMPS/CONTROLLERS



Pfeiffer TCP 300 Power Supply



Pfeiffer TCP 040 Power Supply



Pfeiffer TCP 310 Power Supply



Pfeiffer TPH 330 Turbo Vacuum Pump



Pfeiffer TPH 170 Turbo Vacuum Pump



Pfeiffer TCP 120 Turbo Controller

GenTech's inventory of used and refurbished turbo pumps and controllers all carry a **Thirty (30) Day Warranty**.

GC ACCESSORIES

GenTech Scientific, Inc. has a large inventory of the accessories you need to make your analysis more accurate, reliable and valuable. We carry a large assortment of starter and installation kits to help keep your lab up and running.



HP 7694 Headspace Autosampler



HP 7683 Autosampler



Tekmar LSC 3000 Purge and Trap



HP 7673A Autosampler



HP 6890 Series Autosampler



Tekmar LSC 2000 Purge and Trap



HP 7673B Autosampler



Shimadzu AOC 20i Auto Injector



Tekmar 7000/7050 Equilibrium Headspace Analyzer



CTC A200S Autosampler



Zymark TurboVap LV Evaporator

The Zymark TurboVap LV Evaporator is designed to work with a variety of tube sizes from 1.5 mL to 35 mL. It is in good working condition and tested at GenTech. It is a microprocessor-controlled evaporator providing simultaneous concentration of up to 50 samples. Samples are placed in a temperature-controlled water bath (up to 90°C) and rapid evaporation takes place under nitrogen stream by means of a patented gas flow process in the tubes. The parameters can be programmed, and the run is automatically completed. Includes operator's manual and **NINETY (90) DAY WARRANTY**.

A/D DATA SYSTEMS

Clarity-Lite Data Acquisition Software

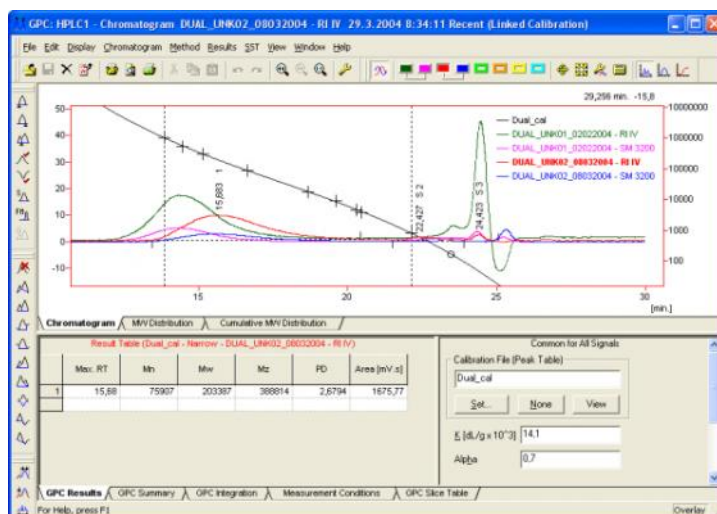
Clarity is an advanced chromatography data station with software modules for data acquisition, data processing, and instrument control.

Clarity Lite is a simplified version of Clarity that provides data acquisition from **one chromatograph** (up to four detectors sharing a common time base). With its reduced set of functions Clarity Lite is an inexpensive solution for a non-regulated environment. Clarity Lite can be easily upgraded at a later date.

Features:

- Low cost single instrument solution
- Can be upgraded to the full version for up to 4 instruments
- From a company that is focused solely on chromatography software
- Third generation of chromatography software
- Thousands of users around the world
- Extended user support
- U-PAD USB 2 port A to D converter
- **THREE (3) YEAR WARRANTY** on hardware

The computer you connect the U-PAD to must support USB.



MS KITS



GC/MS Starter Kit (5970/5971/5972/5973)

- Includes:**
- Septa
 - Glass liner
 - Liner o-rings
 - Inlet seal/washers
 - Column nuts
 - Interface nuts
 - Column ferrules
 - Interface ferrules
 - Column RTX 5ms
 - Column cutter
 - Syringe (10 µL, 7673 AS)
 - Inlet wrench
 - Source cleaning kit
 - Filament



GC/MS Installation Kit

- Includes:**
- GC Install Kit
 - He Regulator (CGA-580) adapted to 1/8"
 - Super Clean Carrier Gas Kit (*triple filter for O₂ / moisture and hydrocarbon with quick connect baseplate*)

HPLC KITS



HPLC Starter Kit

- Includes:**
- (10) Peek column connectors
 - (3) Peek tubing: 1/16" OD x 0.005" / 0.007" / 0.010" ID x 3M
 - (5) Peek tubing elbows 90°
 - (5) Peek tubing elbows 180°
 - (2) Teflon tubing: 1/8" OD x 0.063" / 0.094" ID x 3M
 - (5) Tubing clips
 - Valvtool wrench
 - (2) Open-End wrenches
 - Clean-Cut tubing cutter & replacement blade
 - (2) Peek union connectors 1/16"
 - Sparge filter: 2 µm
 - Inlet filter: 10 µm



HPLC Installation Kit

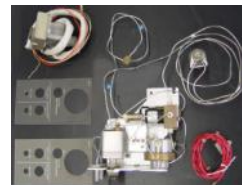
- Includes:**
- (10) Peek column connectors
 - (3) Peek tubing: 1/16" OD x 0.005" / 0.007" / 0.010" ID x 3M
 - (5) Peek tubing elbows 90°
 - (5) Peek tubing elbows 180°
 - (2) Teflon tubing: 1/8" OD x 0.063" / 0.094" ID x 3M
 - (5) Tubing clips
 - Valvtool wrench
 - (2) Open-End wrenches
 - Clean-Cut tubing cutter & replacement blade
 - (2) Peek union connectors 1/16"
 - Sparge filter: 2 µm
 - Inlet filter: 10 µm
 - Solvent bottle and filter

GC KITS



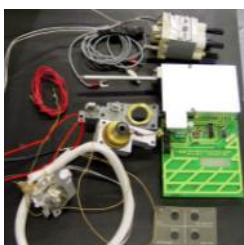
HP 5890 GC Split/Splitless with 6 Channel EPC Kit

- Includes:**
- Split/Splitless injection port
 - Heater/sensor
 - Split/Splitless weldment
 - EPC pneumatics
 - Plumbing
 - Solenoid
 - 6-channel EPC board



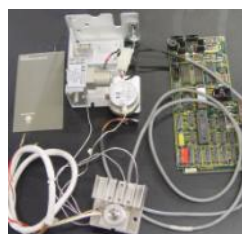
HP 5890 GC Split/Splitless Inlet Kit with Manual Pneumatics

- Includes:**
- Split/Splitless injection port
 - Heater/sensor
 - Split/Splitless weldment
 - Manual pneumatics
 - Plumbing
 - Solenoid



HP 5890 GC FID Kit

- Includes:**
- FID hardware
 - Plumbing
 - Flow block
 - Electrometer board
 - Heater/sensor



HP 5890 GC On-Column with EPC Kit

- Includes:**
- On-column injection port with heater/sensor
 - EPC Pneumatics
 - Plumbing
 - EPC board

GC KITS



GC Installation Kit

Includes:

- Tubing cutter
- 1/8" X 1/4" Reamer
- 7/16" Wrench
- 1/2" Wrench
- (4) 1/8" Brass tees
- (10) 1/8" Brass Front & Back Ferrules
- 50 Feet (15.2 m) Pre-Cleaned 1/8" Copper tubing



Economy GC/FID Installation Kit

Includes:

- He Regulator
- H2 Regulator
- Air Regulator
- GC Installation Kit



GC/FID Installation Kit

Includes:

- GC Installation Kit
- He Regulator (CGA-580) adapted to 1/8"
- H2 Regulator (CGA-350) adapted to 1/8"
- Air Regulator (CGA-590) adapted to 1/8"
- Hydrocarbon Trap for Air
- Hydrocarbon Trap for Hydrogen
- Indicating Oxygen Trap for Carrier



Premium GC/FID Installation Kit

Includes:

- GC Installation Kit
- Filter Bundle with 2-fuel gas filters
- 1-triple for carrier gas
- Three-Position Quick-Connect Baseplate
- He Regulator (CGA-580) adapted to 1/8"
- H2 Regulator (CGA-350) adapted to 1/8"
- Air Regulator (CGA-590) adapted to 1/8"
- Hydrocarbon Trap for Air
- Hydrocarbon Trap for Hydrogen
- Indicating Oxygen Trap for Carrier



FID Maintenance Kit for Agilent GCs

Includes:

- 1/4", 0.4, 0.5, and 0.8 mm ID graphite ferrules
- FID/NPD capillary adaptor
- Capillary nuts
- Jet reamers/ferrule removers
- 1/4" nut
- Scoring wafer
- Capillary column caps
- Ignitor for either Agilent 5890 or 6890/6850
- FID flow measuring adaptor
- 1/4 x 5/16" wrench
- Installation gauge
- Wire cleaning brush
- High-performance Siltek® treated FID jet for either Agilent 5890 (adaptable jet) or 6890/6850 (dedicated jet) GCs
- 1/4" nut driver for jet removal.



Inlet Maintenance Kit for Agilent GCs

Includes:

- 0.4, 0.5, & 0.8 mm ID graphite ferrules
- Viton® O-rings
- Capillary nuts
- Inlet seals
- Reducing nut
- Scoring wafer
- 11 mm Thermolite® septa
- 4.0 mm single gooseneck liner
- 4.0 mm split liner with wool
- Capillary column caps
- 1/4 x 5/16" wrench
- Septum puller
- Installation gauge
- Wire cleaning brush
- Jet reamers/ferrule removers
- Inlet liner removal tool



HP 5890/6890 GC Starter Kit

Includes:

- RTX-5 column*
- 50' 1/8" pre-cleaned copper tubing
- Tubing cutter
- (10) .53 column ferrules
- Syringe
- FID flow adapter
- Column cutter
- 25 septa
- Injector wrench
- (4) Brass tees
- (10) Brass nuts & ferrules
- 7/16" wrench
- 1/2" wrench
- 9/16" wrench
- 1/4" wrench



Shimadzu 2010/GC17-A Starter Kit

Includes:

- RTX-5 column*
- 50' 1/8" pre-cleaned copper tubing
- Tubing cutter
- (4) Shimadzu gas line fittings
- (5) brass unions
- (10) .53 column ferrules
- Syringe
- Column cutter
- 25 septa
- 7/16" wrench
- 10/12 mm metric wrench
- Shimadzu injector wrench

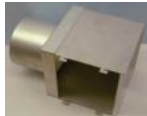
*RTX-5 (low-polarity phase; crossbond 5% diphenyl/95% dimethyl polysiloxane): .53 mm ID, 1.5 µm film thickness x 30 m length, -60 to 310/330° C temperature limits.

PARTS

This is just a small sample of the parts that we have in stock. If you do not see what you need, then give us a call!



**HP/Agilent 6890
Aux EPC Module**



**HP 5890/6890 Air
Diverter**



Smart Card I



Waters Patch Cable



**Microseal High
Pressure Septum Kit
for HP 5890 SS & PP
Inlets**



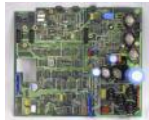
**HP 5890 Remote
Signal Cable Splitter**



**HP 5970 MS
Motherboard**



**Waters 717
Autosampler Power
Supply**



**HP 5890A GC
Motherboard**



**HP 5890 Power
Supply**



**HP 5970 Calibration
Gas Valve**



**Tekmar Status
Board**



**HP 5890 GC INET
Board**



**HP 5890 II GC
Motherboard**



**HP 5970 Heated and
Insulated Transfer
Line**



**Mounting Hardware
for CTC Autosampler
to HP 5890 GC**



**HP 5970 MS
Manifold and
Flexheater**



**HP 5970 15V Log
Amplifier Upgrade**



**Tekmar Distribution
Board**



**HP 5890 Flapper
Motor Assembly**



HP 5970 MS Source



**HP 5970 MS Wiring
Harness**



**Tekmar ALS 2016
Board**



**Power Supply and
Transformer for HP
5890 GC**



**HP 5970 MS
Analyzer**



HP 5890A Keypad



**Tekmar RS 232C
GC I/O Board**



**HP 7673A Au-
tosampler Board**



**HP 5970 Green Tab
Board**



**HP INET Board &
Test Board**



**Tekmar 2000 CPU
Board**



HP BCD/TTL Board



**HP 5970 Blue Tab
Board**



**Tekmar 2000
Display Board**



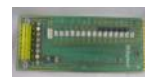
**HP 5890 Split/
Splitless Injector
Pneumatics**



**HP 5970 Brown Tab
Board**



**Various Length
HP-IB Cables**



**Tekmar Heater
Board**

At GenTech Scientific we get shipments of instruments daily, so if you do not see what you need here, give us a call. Chances are we will have what you need. Every component is refurbished and thoroughly tested before we sell it to ensure your satisfaction!

INSTRUMENT TRAINING COURSES

Operator and Chemist Training for

HPLC, GC, LC, AA/ICP, & MS

GenTech Technical Institute

Each course at GenTech Technical Institute is custom tailored to your organization's needs. We offer training in basic operation, instrument maintenance, ASTM methods, instrument theory and troubleshooting. Courses are available at our facility or on-site in your laboratory with your equipment.

We Train Analytical Operators and Chemists.

**Custom Courses: Operation, Maintenance, Repair,
Method Development, Biodiesel.**

~ We Train the Experts. ~

- GC/MS: Agilent, HP, Finnigan, Varian
- LC/MS: Agilent, HP, Finnigan
- GC: Agilent, HP, PE Varian
- HPLC: Agilent, PE, Waters, Varian, Shimadzu
- AA/ICP: Agilent, PE, Varian Shimadzu



ON-SITE - Use this training class as your regularly scheduled maintenance downtime. Get trained to proficiently perform the instrument maintenance yourself.



INSTRUMENT REPAIR

We Provide Expert Service on GC, MS, LC, & LC/MS:

- ◆ Bench Repair on HPLC, GC, Mass Spec, Autosamplers
- ◆ Preventative Maintenance and Service Contracts
- ◆ Reasonable Service Rates: Below Manufacturers' Standard Rates with No "Service Call" Fee
- ◆ Discount for Quantity Service Work
- ◆ Testing/Refurbishment/Estimates for Repair
- ◆ Expert Technical Support and Chemist Support
- ◆ Installation and One Year Warranty on Equipment Sales
- ◆ Customized Training On-Site or In-House
- ◆ Parts Department for Older Parts/Circuit Boards, etc.
- ◆ Appraisal of Lab Equipment
- ◆ Lab Relocation and Setup
- ◆ Buying, Selling and Trading of Laboratory Instruments
- ◆ **Biodiesel Training ASTM D6584 Courses Available**

We ship empty crates to your door so you can ship your GC or Mass Spec to us.



We Repair the Following Equipment:

- ◆ HPLC -- Agilent, HP, PE, Waters, Varian and Shimadzu
- ◆ GC -- Agilent, HP, PE and Varian
- ◆ GC/MS -- Agilent, HP, Finnigan, Varian (Source Cleaning and Exchange Available)
- ◆ LC/MS -- Agilent, HP and Finnigan
- ◆ Autosamplers -- Agilent, HP, Varian, CTC, Tekmar Purge & Trap and Headspace
- ◆ AA/ICP -- Perkin Elmer and Varian.

SIXTY (60) DAY WARRANTY on Bench Repair!

THIRTY (30) DAY WARRANTY on Parts!

Thermo TSQ 7000 & LCQ Board Exchange Repair

- RF Amplifier Board
- Vacuum Control Board
- Filter Control Board
- System Board

Other Circuit board repairs are available.

FREE
Phone Support for All Our Customers!

OQ/PQ Qualification Service

Quality regulatory compliance for any LC or GC system configuration

- Sample Introduction
- System Performance
- Electronic Components
- System Detectors
- Other Critical Hardware



Restek Star Service Provider

SERVICE DEPARTMENT

(585) 492-1068

For repairs on any of the above equipment, e-mail our Service Technicians at:

service@gentechscientific.com

TRADE-IN PROGRAM

GenTech Scientific Instrument Trade-in Program - "Turn Clutter into Credit"

Why trade in your old or unused Instruments?

- Return on your investment
- Reduce the cost of new equipment
- Make a good value even better
- Maximize your bench space, clear it off
- Trade for cash or credit
- Make room for research

Your Trade-in can be used in any of these ways.

The trade-in value of your instrument can be applied directly to your purchase from GenTech Scientific. This adds on greater immediate value to your instrument purchase. You can also accumulate GenTech Dollars on traded equipment for future purchases to stretch your budget. We also will offer a **cash price** for your used instruments should you not purchase from GenTech immediately. The better the condition of your trade-in, the higher the price you can receive. We encourage you to **send pictures** so we can give the highest trade-in value.

Trade-In Examples: "Wanted"

GC, GC/MS

Agilent/HP 6890
Agilent/HP 5890A or II GC
Agilent/HP 5970, 5971, 5972, 5973 GC/MS
Thermo Trace GC and MS
Thermo Polaris DSQ GC/MS
Varian 3400 GC with Saturn Ion Trap

LC, LC/MS

Agilent/HP 1050, 1100 HPLC
Hitachi HPLC
Thermo TSQ 7000 MS
Thermo LCQ MS
Waters HPLC Systems
Shimadzu HPLC

AA/ICP

Perkin Elmer AA Systems
Perkin Elmer Optima ICP or Elan ICP/MS
Perkin Elmer Elan 6000, 6100, 9000
Varian Vista/Liberty, SpectrAA
Agilent/HP 4500, 7500

Spectrophotometers

Perkin Elmer Lambda, FTIR

Accessories

Agilent/HP 7673A or B Autosampler
CTC PAL Autosampler
HP Headspace Sampler
Shimadzu AOC Auto Injector
Zymark TurboVap
Tekmar Purge and Trap



GenTech Scientific, Inc. is a diversified analytical equipment company dedicated to providing quality new and refurbished instruments and impeccable service to the scientific community around the world. Founded in 1995, GenTech Scientific, Inc. has become a market leader in the sale of recycled analytical equipment, specializing in GC, HPLC, and Mass Spectrometer systems and accessories from all major manufacturers.



**“DISCOVER THE DIFFERENCE”
ANALYTICAL INSTRUMENT
SALES, SERVICE, PARTS, TRAINING**

Built on the foundation of excellent quality and high integrity, GenTech Scientific, Inc.'s reputation for reliable service and honesty has remained the cornerstone of the company. Our goal - to make your daily analysis more accurate, reliable, valuable and profitable by using refurbished equipment.

**Contact us at
(585) 492-1068
sales@gentechscientific.com**