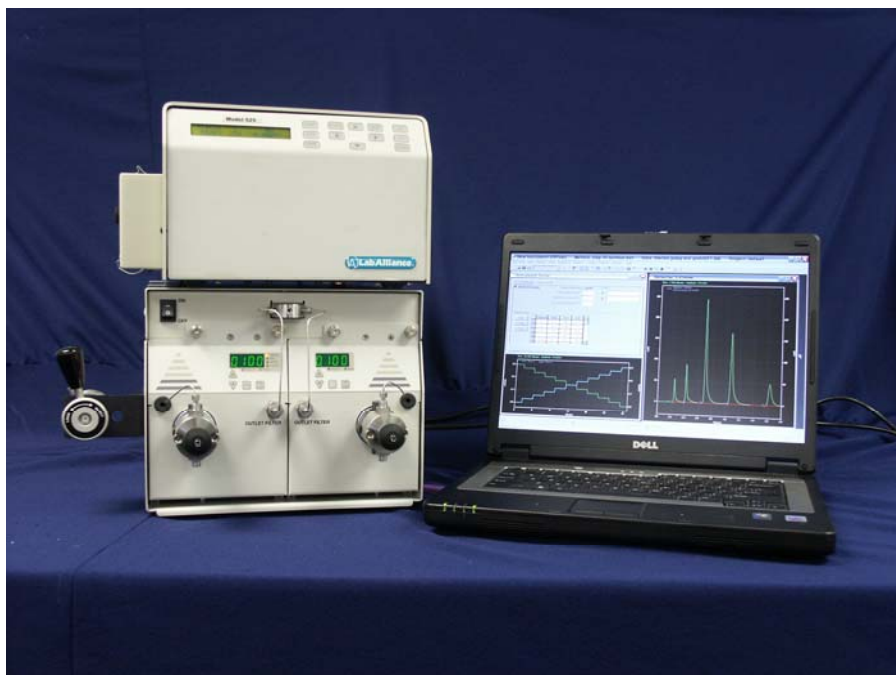


B2300 Binary Gradient System

Performance Beyond its Price



B2300 with Model 201/525 Detector and EZ Start

Complete system makes setup easy

The B2300 Binary Gradient System features a binary pump, UV detector, and EZStart software. For reproducible mixing, a static mixer forms part of the high-pressure binary gradient mixing kit. An injection valve with a 20 μ L loop, injector bracket, column holder, nuts, ferrules, and tubing complete the system.

Functionality and Flexibility

From teaching to daily analytical analysis, the B2300 is rugged, repeatable, and reliable.

Optional head kits are available for flow rates to 10 mL or 40 mL to extend your separation flexibility.

Fixed- and variable-volume autosamplers, additional detectors, FC Jr. fraction collector, and a solvent recycler are available as options.

Data and Automation

The B2300 is controlled by **EZStart** software. Based on the highly popular EZChrom Elite™ software, EZStart is the ideal solution for laboratories who want a simple-to-use chromatography data system with comprehensive software features and instrument control. When used with the Model 500 detector, data acquisition is by analog signal. For complete system control, choose the B2300 with 201 or 525 detector.

Choice of Material

The B2300 Binary Gradient systems are available with Type 316 stainless steel or metal-free, biocompatible PEEK fluid path at no extra charge.

B2300 Binary Gradient System

Meets your performance requirements

The B2300 Pump features an advanced design rapid-refill cam and a combination prime-purge valve/low volume diaphragm-type pulse damper, giving minimal baseline noise and low pulsation. Its flow rate of .001-5 mL/min (6000 psi) is suitable for most analytical applications. Head kits are available for 10 and 40 mL/min.

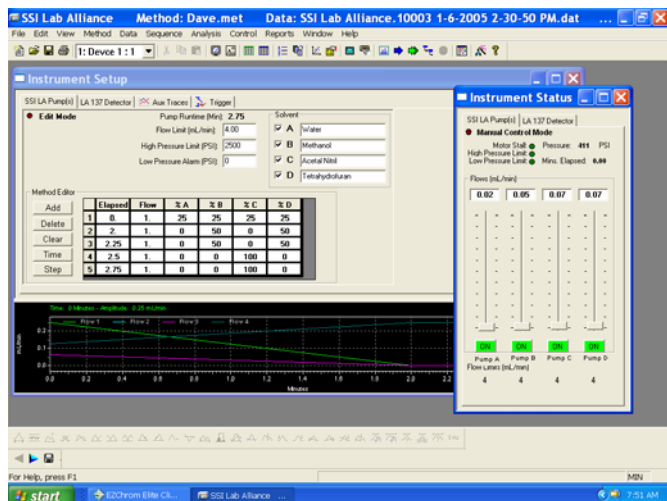
The Model 500 UV/VIS Detector features high sensitivity with selectable absorbance ranges from 0.0005 to 2.0 AUFS. A second-order Bessel filter, fiber optics, and proprietary circuits ensure low-noise, low-drift performance.

The Model 201 detector is a time-programmable, variable wavelength UV/Vis detector. It operates in single-wavelength mode in either the UV range or the visible range.

The Model 525 is a full-featured dual-wavelength programmable detector that utilizes the same optical design as the Model 201. In addition, the Model 525 offers spectral scanning, multiple method file storage, queue feature for file linking, and more. A prealigned deuterium lamp is included with all three detectors. A tungsten lamp is included with the Model 525 and available as an option for the 500 and 201. Data collection via EZStart for the Model 500 is by analog signal. EZStart uses RS232 for digital control and acquisition from the 201 and 525.

Software operation

EZStart consists of two software modules: EZStart Configuration and EZStart. With EZStart, instrument control and analysis is reduced to just 3 steps: Configure, Run, and Report.



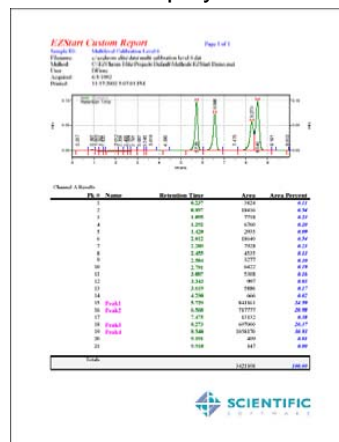
EZ Start is an HPLC system control and data acquisition package with digital control for SSI

LabAlliance pumps, Model 201/525/305 detector, and LabAlliance autosampler. The **EZ Start** 420 X module can alternatively be used to acquire data from 4 analog detector inputs.

With its combination of capability, performance, and simplicity, **EZ Start** unifies the HPLC system

Key Features of EZ Start:

- ◆ Control for any SSI/LabAlliance pumps, for high pressure gradients, UV/Vis or fluorescence detector, and a LabAlliance autosampler.
- ◆ Instrument control fits seamlessly with the system to provide a consistent user interface regardless of the hardware controlled.
- ◆ Simple user interface features guide users through setup and operations. No confusing icons or multiple program windows are needed.
- ◆ Easy to connect interface box hooks up to most standard Pentium PCs running Windows XP.
- ◆ Built-in timing mechanism to work with Windows applications without data loss.
- ◆ Real-time display of data.



Typical report generated from EZStart.

New Easy Prime heads

The B2300 Pump features a head design with the prime purge valve integrated into each fluid path. This insures the solvent is drawn from the reservoir even if the other pump is running.

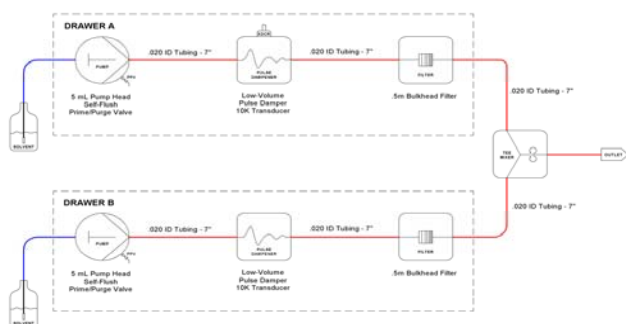
B2300 Binary Gradient System



Priming is in each head

Reproducibility you can count on

The B2300 Pump gives reproducible gradients and chromatography due to its pulse free low volume fluid path shown below.



The result of this simplicity and low dead volume is reproducibility that is seen in the chromatographic

		Peak				
Peak 1	Peak 2	Peak 3	4	Peak5		
0.248	0.422	0.7	1.079	1.638		
0.247	0.419	0.698	1.078	1.638		
0.247	0.418	0.696	1.075	1.636		
0.247	0.419	0.698	1.077	1.635		
0.246	0.418	0.696	1.076	1.635		

	Peak 1	Peak 2	Peak 3	Peak 4	Peak5
Mean	0.247	0.4192	0.6976	1.077	1.6364
Standard Error	0.032%	0.073%	0.075%	0.071%	0.068%
Standard Deviation	0.071%	0.164%	0.167%	0.158%	0.152%

performance.



B2300 with Model 500 Detector

Easy setup

The B2300 can be set up by the user in most cases; however, if you require assistance, our experienced technicians are available for on-site installation (additional charge).

Ordering information

Description	Part No.
B2300 System with Model 500, SS	B2300500S
B2300 System with Model 500, PEEK	B2300500P
B2300 System with Model 201, SS	B2300201S
B2300 System with Model 201, PEEK	B2300201P
B2300 System with Model 525, SS	B2300525S
B2300 System with Model 525, PEEK	B2300525P

All systems require a PC, Windows, and 2 free native serial ports. Compatible with portable computers with addition of PCIMCIA card not supplied.

Options

Autosampler, variable injection volume	180160
Fraction Collector Jr.	IS-68-3870-001
w/rack for 13 mm. dia. tubes	
Tungsten Lamp for 500 & 201 Detectors	SC201306
PC & monitor with software preinstalled	902402
Ultrafluor Fluorescence Detector	TS0305