

Tune Mode API Instrument

- Configure
 - Security Configuration
 - Hardware Configuration
 - Report Template Editor
- Tune (1)
 - Resolution Optimization
 - Quantitative Optimization
 - Manual Tuning
- Acquire
 - IDA Method Wizard
 - Build Acquisition Method
 - Build Acquisition Batch
 - Express View
- Explore
 - Open Data File
 - Open Compound Database
- Quantitate
 - Build Quantitation Method
 - Quantitation Wizard
 - Review Results Table

Acquire... Start Ramp Parameter Edit Ramp... MS Method Use

Source/Gas Compound Resolution Detector MS Advanced MS

Quad 1
 Ion Energy 1 (E1) 1.0
 Q1 Resolution: Unit Advanced...

Scan type: Q1 MS (Q1)

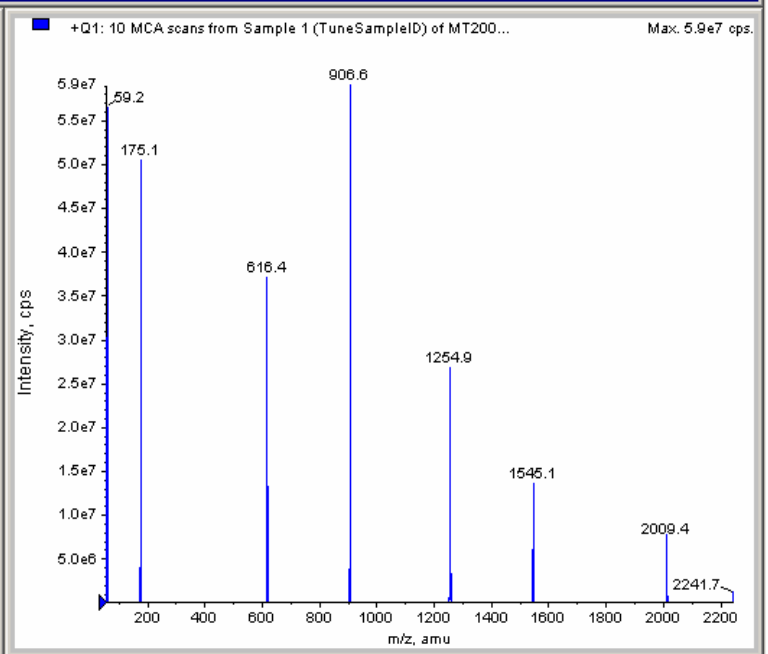
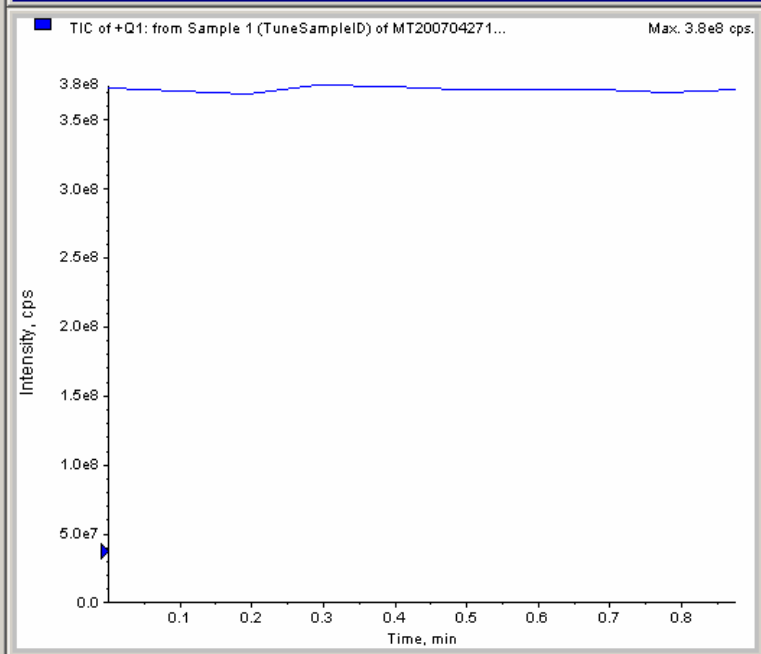
Polarity
 Positive
 Negative

Center / Width
 Parameter Range

	Center (amu)	Width (amu)	Time (sec)
1	59.050	6.000	0.6100
2	175.133	6.000	0.6100
3	616.464	6.000	0.6100
4	906.673	6.000	0.6100
5	1254.925	6.000	0.6868

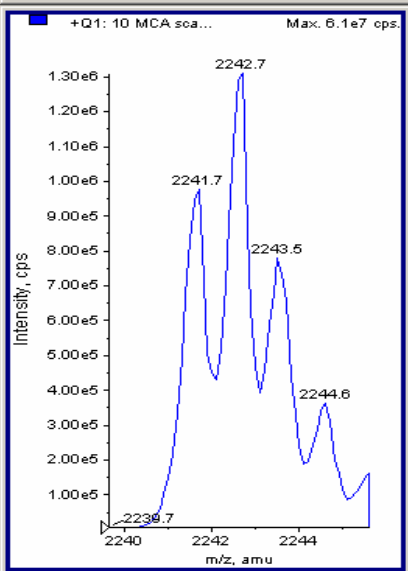
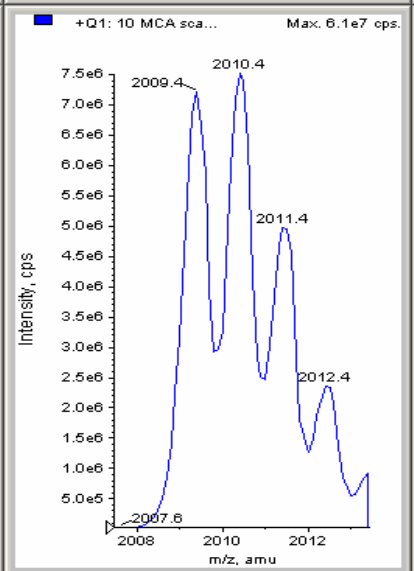
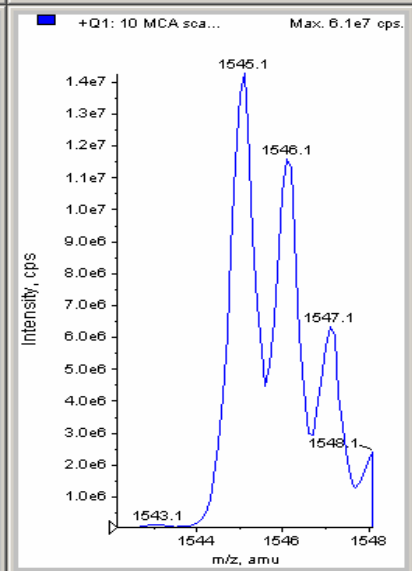
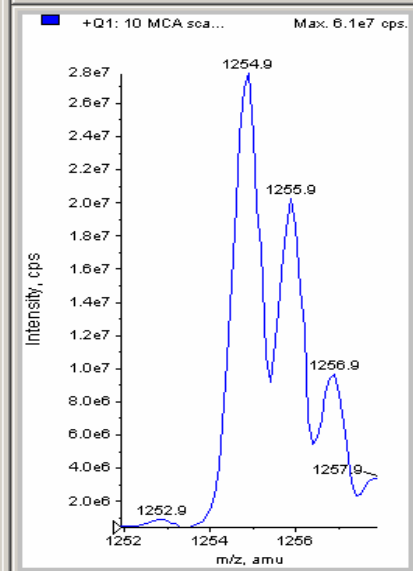
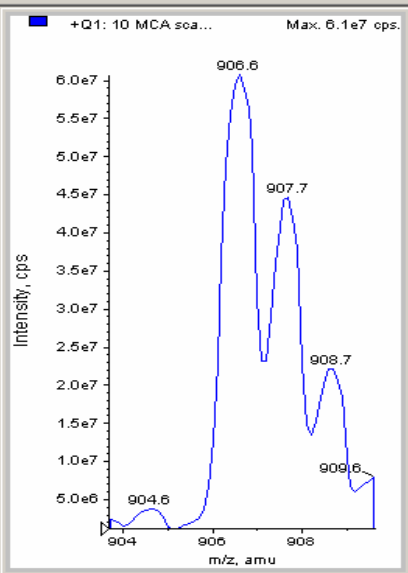
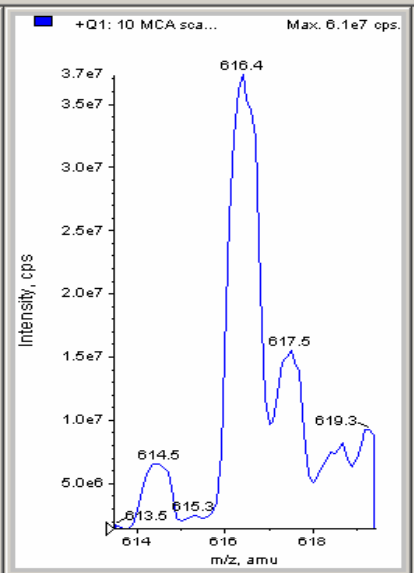
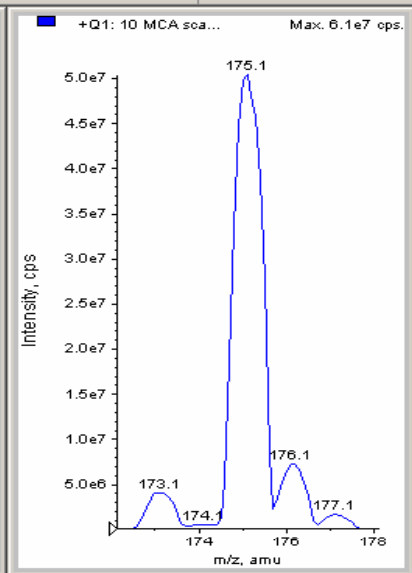
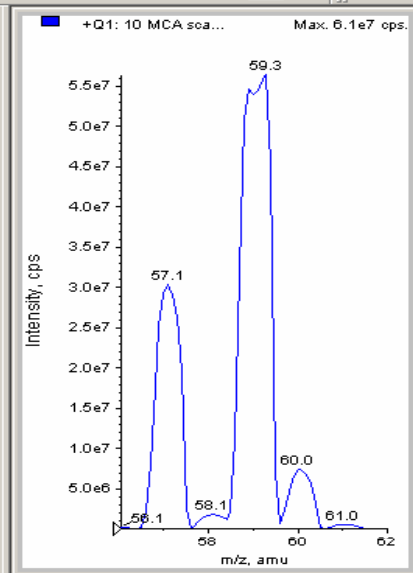
MCA Total Scan Time (includes Pause): 5.8476 (sec)

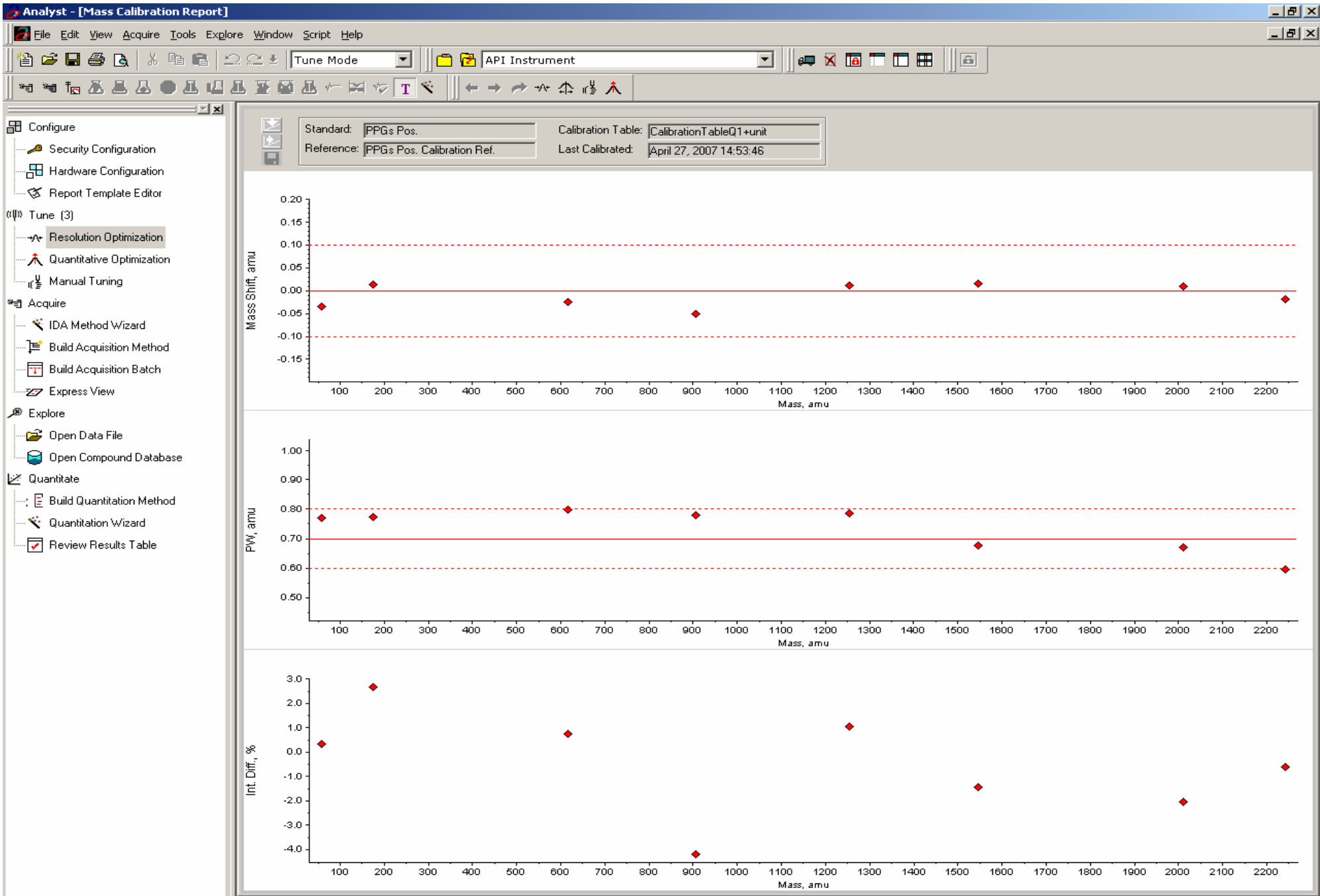
Period
 Duration: 0.975 (min) Cycles: 10 Delay Time: 0 (sec)



Configure

- Security Configuration
- Hardware Configuration
- Report Template Editor
- Tune (2)**
 - Resolution Optimization
 - Quantitative Optimization
 - Manual Tuning
- Acquire
 - IDA Method Wizard
 - Build Acquisition Method
 - Build Acquisition Batch
 - Express View
- Explore
 - Open Data File
 - Open Compound Database
- Quantitate
 - Build Quantitation Method
 - Quantitation Wizard
 - Review Results Table





For Help, press F1

User Name: API3000\administrator

D:\Analyst Data Idle